

PART OF THE SE. 1/4, OF SECTION 36, T.7N., R.3W., S.L.B. & M.

460

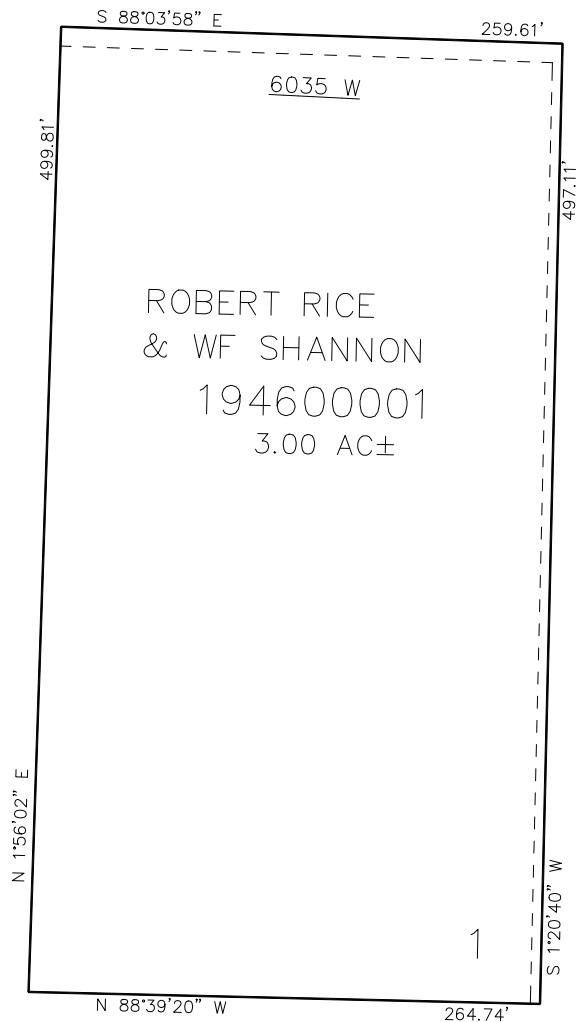
# STEED FARM SUBDIVISION

IN WEBER COUNTY

TAXING UNIT: 531

SCALE 1" = 50'

2050 NORTH STREET



SEE PAGE 57

SEE PAGE 57

10' UTILITY & DRAINAGE EASEMENTS EACH  
SIDE OF PROPERTY LINES AS INDICATED  
BY DASHED LINES EXCEPT AS OTHERWISE  
SHOWN.

FOR COMPLETE SURVEY DATA SEE  
ORIGINAL DEDICATION PLAT IN  
BOOK 94, PAGE 10 OF RECORDS.